



11 Saville Road, Sutton-In-Ashfield

Guide Price £300,000-£310,000 Freehold

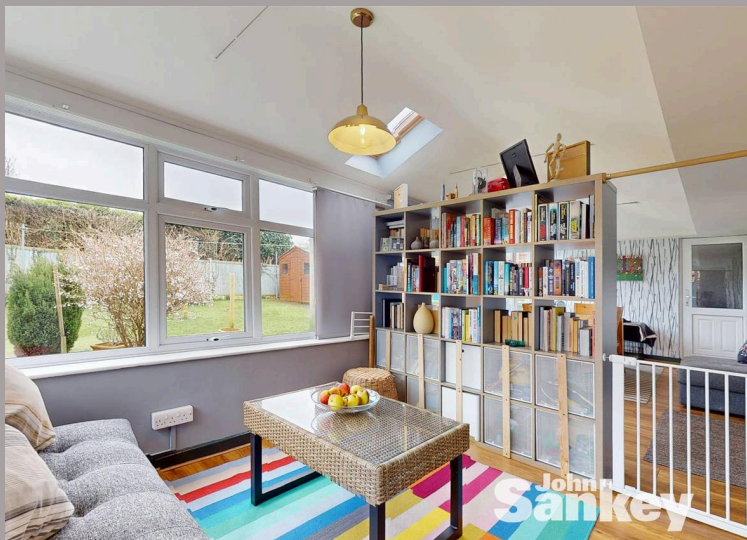
EXTENDED DETACHED BUNGALOW • SOUGHT AFTER LOCATION, EPC RATING: C • STYLISH & MODERN INTERIOR •
SPACIOUS LOUNGE AND GARDEN ROOM • THREE BEDROOM, LOVELY PLOT



41 Albert Street, Mansfield, NG18 6AN
Sales: 01623 627 247
email:enquiries@johnsankey.com

John Sankey





Outside

The exterior of the property occupies a lovely plot with a driveway at the front which provides parking for at least two cars, ensuring easy access for residents and visitors alike. To the side of this, there is a spacious lawn bordered by wildflower beds, adding natural charm to the landscape. Gated access leads to both the garage and the rear garden. The rear garden features a combination of lawn and patio areas, offering versatile outdoor living spaces. Additionally, there is artificial grass, providing a low-maintenance solution for year-round enjoyment. The garden itself is a lovely private retreat in our opinion with access to both sides of the property allowing for easy movement around the premises.

Additional Information

Tenure: Freehold

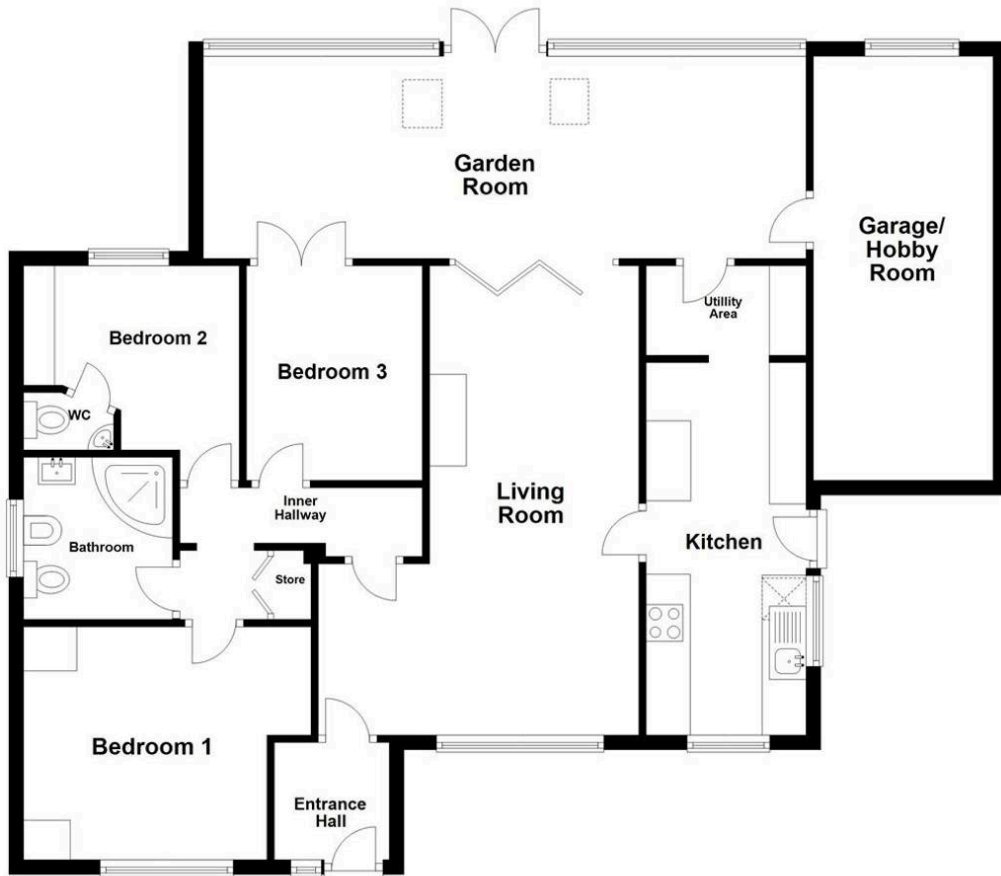
Council Tax Band: C

Mobile/Broadband Coverage Checker visit:
www.ofcom.org.uk then click mobile & broadband checker.



Ground Floor

Approx. 114.1 sq. metres (1228.2 sq. feet)



Total area: approx. 114.1 sq. metres (1228.2 sq. feet)

Whilst every attempt has been made to ensure the accuracy of this floorplan, all measurements are approximate and no responsibility is taken for any error, omission or mis-statement. This plan and its measurements are for illustrative purposes only.
Plan produced using PlanUp.

This brochure is to be used as a guide only. Room measurements and floor plan are not to be relied upon for furnishing purposes and are approximate.



41 Albert Street, Mansfield, NG18 6AN
Sales: 01623 627 247
email:enquiries@johnsankey.com

John Sankey

